

CurrentCare Guidebook

A guide to patient information available in CurrentCare
December 15, 2017

CurrentCareRI.org



BENEFITS

- ✓ Improve patient care
- ✓ Save staff time
- ✓ Increase care coordination
- ✓ Helps meet value-based programs

Inside...

What is CurrentCare? **2**

Clinical Data **6**

Primary Care **10**

Specialists **11**



Rhode Island
Quality Institute



What is CurrentCare?

CurrentCare is Rhode Island's statewide Health Information Exchange (HIE), designed and built through the cooperative effort of the RI healthcare community. This secure network collects information from practices, hospitals, labs, imaging centers, pharmacies and other data sources to share crucial patient information and avoid fragmented data. When patients opt in to CurrentCare, their provider(s) can access their available healthcare information to provide the right care at the right time. Through CurrentCare, duplicate testing can be avoided and clinical staff can quickly access critical information in real time to support safe and effective transitions of care.

NEW! Individuals enrolled in CurrentCare can securely access their personal health record online 24/7 with CurrentCare for Me.

CurrentCareRI.org

Systems Sharing Data with CurrentCare

CurrentCare is able to receive clinical information from 12 Electronic Health Record or Health Information Exchange systems:

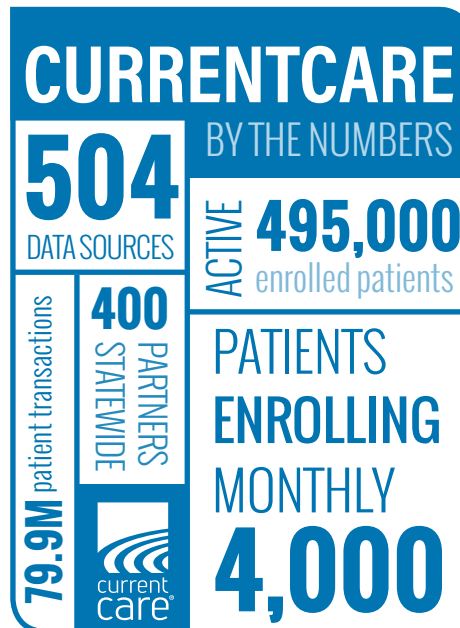
- | | |
|------------------|----------------|
| Allscripts | GECentricity |
| Amazing Charts | Greenway |
| athenahealth | Intergy |
| Cerner | MEDITECH |
| eHealth Exchange | NextGen |
| Epic | PointClickCare |

COMING SOON:
 eClinicalWorks
 MatrixCare

The following EHRs receive clinical summaries from CurrentCare directly into their patient records:

- athenahealth**
- eHealth Exchange
- Epic**
- MEDITECH
- NextGen

**Able to add and reconcile medications, allergies and problems



Clinical Data Available

Encounter Documents

Clinical Documents

Continuity of Care Documents (CCDs) provide a record of the most recent encounter from an organization, including the most up-to-date problems, meds, and allergies. May include vitals, procedures, history, progress notes or other practice-specific information. Titles include: **Summary of Episode Note, Continuity of Care Document or Medical Record Summary.**

Discharge Documents (Hospitals)

Discharge CoCs (Continuity of Care Documents), required by the State of RI, include a summary of a visit to a hospital or ED. Individual visits can be viewed as separate documents, including prescribed meds, discharged-to location, patient instructions & more! Downloads to your computer, viewable in Word or WordPad.

Discharge summaries are available only after sign off by a treating provider. May include a reason for hospitalization, discharge condition, and patient & family instructions. Frequently it will contain **Hospital Course/Progress notes.** Will typically be available after the resident/provider has signed off, and will be updated after an attending provider signs off.

ADT (Admission, Discharge, Transfer)

Ever wonder where your patients are? When a patient has been admitted or discharged, you can view **Encounter Data** from the hospitals and skilled nursing facilities that share ADT information with CurrentCare.

Encounter Data

You will find encounter-specific data on the following tabs: **Medications, Conditions, Allergies & Alerts**, and you can see a list of encounters on the **Encounters** tab.

Test/Results

You will find results on the following tabs: **Lab Results, Diagnostic Imaging, EKG Imaging.** Also found in the patient's Summary Report and within some Documents.

Part 2 Data

Substance Use Disorder (42 CFR Part 2) — Medical and behavioral health information from substance and alcohol treatment centers ('Part 2 Data') for patients who have consented to share this information.

Clinical Data

Encounter Documents

ADTs⁺

Encounter Data

Tests/Results

Hospital Systems & Facilities

LIFESPAN

	Clinical Summary	Discharge CoC	Discharge Summary	ADTs ⁺	Allergies	Meds	Diagnoses	Problem List	Labs	Imaging	EKG Imaging
Rhode Island Hospital (RIH) <i>(excluding BH units)</i>	✓	✓		✓	✓	✓	✓	✓	✓	✓	
Hasbro Children's Hospital	✓	✓		✓	✓	✓	✓	✓	✓	✓	
The Miriam Hospital (TMH)	✓	✓		✓	✓	✓	✓	✓	✓	✓	
Newport Hospital (NPH)	✓	✓		✓	✓	✓	✓	✓	✓	✓	
Lifespan Labs									✓		
<i>Ambulatory Practices - See Pages 8-11</i>	✓				✓	✓	✓	✓			
Gateway Health Center - Part 2 Data											

CARE NEW ENGLAND

Kent Hospital <i>(excluding BH units)</i>				✓	✓		✓	✓	✓		✓
Women & Infants (WIH)	✓			✓	✓	✓	✓	✓	✓		✓
Memorial Hospital (MHRI)	✓			✓	✓	✓	✓	✓			
Butler Hospital - Part 2 Data	✓				✓	✓	✓	✓			
<i>Ambulatory Practices - See Pages 8-11</i>	✓				✓	✓	✓	✓			
The Providence Center - Part 2 Data											

CHARTERCARE

Our Lady of Fatima Hospital	Coming Soon!		✓	✓	✓	Coming Soon!	✓	✓	✓	✓	
Roger Williams Medical Center (RWMC)	Coming Soon!		✓	✓	✓	Coming Soon!	✓	✓	✓	✓	
<i>Ambulatory Practices - See Pages 8-11</i>	✓				✓	✓	✓	✓			

LANDMARK MEDICAL

Landmark Medical Center (LMC)		Coming Soon!		✓	✓		✓	✓	✓	Coming Soon!	
Rehab Hospital of RI (RHRI)		Coming Soon!		✓	✓		✓	✓	✓	Coming Soon!	

YALE NEW HAVEN HEALTH

L & M Hospital				✓	✓		✓	✓			
Westerly Hospital				✓	✓		✓	✓	✓		
Yale New Haven Hospital	Coming Soon!				Coming Soon!	Coming Soon!	Coming Soon!	Coming Soon!			

SOUTH COUNTY HOSPITAL

South County Hospital (SCH)	✓			✓	✓	✓	✓	✓	✓		
<i>Ambulatory Practices - See Pages 8-11</i>	✓				✓	✓	✓	✓			

VA MEDICAL CENTER

4 VA Medical Center	✓				✓	✓	✓	✓	✓ (Docs Tab)	✓ (Docs Tab)	
Outpatient Clinics	✓				✓	✓	✓	✓	✓ (Docs Tab)	✓ (Docs Tab)	

Hashes indicate that data type is not applicable for the source

Empty cell indicates that data from this source is not currently available - ADT = Notification of ED/Inpatient Admission, Discharge and Transfers

Clinical Data

Other Data Sources (Independent Facilities)	Encounter Documents			ADTs ⁺	Encounter Data				Tests/Results		
	Clinical Summary	Discharge CoC	Discharge Summary		Allergies	Meds	Diagnoses	Problem List	Labs	Imaging	EKG Imaging
URGENT CARE											
Armistice Urgent Care Center	✓				✓	✓	✓	✓			
CVS Minute Clinics (8 sites)	✓				✓	✓	✓	✓			
Providence Community Health Centers Express	✓				✓	✓	✓	✓			
IMAGING											
Advanced Radiology										✓	
Coastal Imaging										✓	
Open MRI of New England										✓	
Rhode Island Medical Imaging										✓	
XRA Medical Imaging										✓	
LABS											
Coastal Medical (labs)									✓		
Dominion Diagnostics									✓		
East Side Clinical labs									✓		
Quest Diagnostics									✓		
SKILLED NURSING FACILITIES											
Genesis HealthCare (see list below)	✓			✓	✓	✓	✓	✓			
Health Concepts (see list below)	Coming Soon!			Coming Soon!	Coming Soon!	Coming Soon!	Coming Soon!	Coming Soon!			

 Hashes indicate that data type is not applicable for the source
 Empty cell indicates that data from this source is not currently available
 + ADT = Notification of ED/Inpatient Admission, Discharge and Transfers

SKILLED NURSING FACILITIES > Expanded

Genesis HealthCare

- Coventry Skilled Nursing & Rehab
- Grand Islander Center
- Grandview Center
- Greenville Center Skilled Nursing & Rehab
- Greenwood Center
- Kent Regency
- Pawtucket Center Skilled Nursing & Rehab
- South County Nursing & Rehab Center
- Warren Center Skilled Nursing & Rehab

Health Concepts

- Bayberry Commons
- Eastgate Nursing & Rehab Center
- Elmwood Health Center
- Heritage Hills Nursing & Rehab Center
- Morgan Health Center
- Pine Grove Health Center
- Riverview Healthcare Community
- South Kingstown Nursing & Rehab Center
- Village House Convalescent Home
- West Shore Health Center
- Westerly Health Center

Medication Data Sources

Pharmacies	Pharmacy Benefit Managers (SureScripts)	Providers/Hospitals
Any Prescriptions from:	Prescriptions at any pharmacy through:	Medications as noted by participating provider organizations
CVS	CVS Caremark (CMX)	See Pages 4-11 for a list of provider and hospital organizations sending Clinical Summary data
Rite Aid	Express Scripts (ESI)	
Walgreens	Optum Rx (ORX)	
	Prime BCBSRI	
Displays as "Date Dispensed"	Displays as "Date Dispensed"	Displays as "Date Started"

The following is a listing of all the participating sites that share their encounter data with CurrentCare.

Encounter Documents



Encounter Data

PRIMARY CARE - Sites Sharing Data with CurrentCare

- Aaron Way, DO Osteopathic Family Medicine LLC
- Affinity Family Medicine Pawtucket
- Affinity Internal Medicine Pawtucket
- Affinity Internal Medicine Warwick
- Affinity Nicholas Turilli, MD
- Affinity Primary Care East Side
- Arcand Family Medicine
- Atmed Primary Care
- Blackstone Valley Center for Internal Medicine
- Blackstone Valley Community Health Center
- Brian Kwetkowski, DO
- Brookside Family Medicine
- Center for Primary Care at Women & Infants
- CharterCARE Medical Associates
- CNEMG Family Medicine Lincoln
- Coppola Medical Associates
- Cumberland Primary Care
- East Greenwich Family Practice
- Family Health and Sports Medicine
- Family Physicians of Newport
- Family Physicians of Portsmouth
- Family Physicians of Tiverton & Little Compton
- Gary King, DO
- Greenwich Medical Associates
- Hasbro Children's Hospital Pediatric Primary Care
- Herman Ayvazyan, MD
- Jamestown Family Practice
- John M. Corsi, DO
- John J. Solomon, DO
- Kristine Cunniff, DO
- Leonard Mannarelli, DO
- Lifespan Physician Group, Primary Care - Newport
- Lifespan Physician Group, Primary Care - Tiverton
- Lynn Ho, MD
- Massasoit Internal Medicine
- Memorial Family Care Center
- Memorial Hospital Primary Care Center - Plainville*
- Memorial Internal Medicine Center
- Memorial Pediatric Primary Care
- Michael R. Heru, MD
- Michael Souza, DO
- Miheala Iovanel, MD
- Northeast Internal Medicine
- NRI Medical Services
- Ocean State Primary Care
- Olga Tverskaya, MD
- Primary Care of Barrington
- Primary Medical Group of Warwick
- Providence Community Health Ctrs (10 sites)
- Rhode Island Hospital Center for Primary Care
- Rhode Island Medicine
- Rhode Island Hospital Med-Pedi Primary Care Center
- Richard DelSesto, MD
- Richard Ohnmacht, MD
- Smithfield Primary Care
- South County Hospital Family Medicine
- South County Internal Medicine
- South County Walk-In & Primary Care
- Stuart V. Demirs, MD
- Thomas David Puleo, MD
- University Family Medicine
- VA Medical Center
- Warren Family Practice
- WellOne Primary Medical & Dental (3 sites)
- Westerly Medical Center
- Wickford Family Medicine
- Women's Medicine Collaborative
- Wood River Health Services
- Your Health, Inc.

Encounter Documents



Encounter Data

SPECIALISTS - Sites Sharing Data with CurrentCare

- Affinity Cardiology
- Affinity Hematology and Oncology
- Affinity Neurology Warwick
- Affinity Orthopedics & Sports Medicine
- Affinity Rheumatology
- Affinity Sports Medicine
- Affinity Surgery Pawtucket
- Alzheimer's Disease & Memory Disorders Ctr
- Bayside OB-Gyn
- Brigham and Women's Thoracic Surgery Associates
- Cardiovascular Institute at Newport Hospital
- Cardiovascular Institute at The Miriam Hospital (4 sites)
- Cardiovascular Institute, Lifespan Physician Group (12 sites)
- Caring for Women (5 sites)
- Care New England Spine Care
- Care New England Surgical Care
- Center for Wound Care and Hyperbaric Medicine
- CharterCARE Medical Associates
- Comprehensive Cancer Center at East Greenwich
- Comprehensive Cancer Center at Newport Hospital
- Comprehensive Cancer Center at Rhode Island Hospital
- Comprehensive Cancer Center at The Miriam Hospital
- Dermatology, Lifespan Physician Group
- Early Childhood Clinical Research Center
- East Greenwich Spine & Sport
- Gyncare, Kader & Bermudez
- Genesis HealthCare (9 sites)
- Hallett Center for Diabetes and Endocrinology
- Hasbro Children's Adolescent Weight Management
- Hasbro Children's Child Neurodevelopment Center
- Hasbro Children's Cleft and Craniofacial Center
- Hasbro Children's Diabetes Outpatient Education Center
- Hasbro Children's Hospital Adolescent Healthcare Center (3 sites)
- Hasbro Children's Hospital Child Protection Center
- Hasbro Children's Hospital Cystic Fibrosis Center
- Hasbro Children's Hospital Dermatology
- Hasbro Children's Hospital Early Intervention Program
- Hasbro Children's Hospital Endocrine Disorders
- Hasbro Children's Hospital Endocrinology and Metabolism (2 sites)
- Hasbro Children's Hospital Families First CEDARR Center
- Hasbro Children's Hospital Feeding Program
- Hasbro Children's Hospital Food Allergy Center
- Hasbro Children's Hospital Foster Care Program
- Hasbro Children's Hospital Gastroenterology (3 sites)
- Hasbro Children's Hospital Hemophilia Program
- Hasbro Children's Hospital Infectious Diseases Clinic
- Hasbro Children's Hospital Lead Clinic
- Hasbro Children's Hospital Lupus Clinic
- Hasbro Children's Hospital Nephrology (3 sites)
- Hasbro Children's Hospital Nutrition
- Hasbro Children's Hospital Nutrition Center
- Hasbro Children's Hospital Occupational Therapy
- Hasbro Children's Hospital Partial Hospital Program
- Hasbro Children's Hospital Pediatric Heart Center (2 sites)
- Hasbro Children's Hospital Pediatric Ophthalmology
- Hasbro Children's Hospital Physical Therapy
- Hasbro Children's Hospital Rabies Clinic
- Hasbro Children's Hospital Refugee Health Clinic
- Hasbro Children's Hospital Rehabilitation Services
- Hasbro Children's Hospital Teens with Tots
- Hasbro Children's Hospital Urology (2 sites)
- Hasbro Children's Hospital Pediatric Infectious Diseases
- Hasbro Children's Respiratory & Immunology Center (3 sites)
- Hasbro Children's Sleep Disorder Lab
- Hasbro Children's Specialty Practice
- Hasbro Children's Ventilator Integration Program
- Kent Surgical Associates

Got Questions? Get in touch!

If you need help with CurrentCare, please give us a call at **888.858.4815**, or drop us an email at CurrentCare@riqi.org.

SPECIALISTS - Continued...

- Laurie Reeder, MD
- Lifespan Lyme Disease Center at Newport Hospital
- Lifespan Physician Group Gynecology
- Lifespan Physician Group Ophthalmology
- Lifespan Physician Group, The Miriam Hospital
- LPG Center for Weight and Wellness
- LPG Laser & Aesthetic Surgery Center
- LPG Neurointerventional Radiology
- LPG Newport Orthopedics
- LPG Ophthalmology East Providence
- LPG Outpatient Psychiatry
- Memorial Hospital Ambulatory Care Ctr
- Memorial Hospital Ambulatory Pulmonary Clinic
- Memorial Hospital Cancer Ctr
- Memorial Hospital Cardiology
- Memorial Hospital Dermatology
- Memorial Hospital Neurology
- Memorial Hospital Neurodevelopmental Center
- Memorial Hospital Women's Health Care Specialists
- Neurosurgery, Lifespan Physician Group (5 sites)
- Newport Dermatology, Lifespan Physician Group
- Newport Endocrinology, Lifespan Physician Group
- Newport General Surgery
- Newport Hospital Rabies Clinic
- Newport Hospital Employee Health Services
- Newport Hospital Infectious Diseases
- Newport Hospital Neurology
- Newport Hospital Physiatry
- Newport Hospital Rheumatology
- Newport Hospital Sleep Disorders Lab
- Newport Hospital Women's Health Services (2 sites)
- Newport Pulmonary, Lifespan Physician Group
- Newport Women's Health - Newport
- OB-GYN Associates (7 sites)
- Orthopedics Insitute at Rhode Island Hospital
- Radiosurgery Center, Rhode Island Hospital
- Rheumatology, Lifespan Physician Group
- Rhode Island Hospital Adult Endocrinology Services
- Rhode Island Hospital Audiology
- Rhode Island Hospital Burn Center
- Rhode Island Hospital Dermatology Clinic
- Rhode Island Hospital Ear Nose and Throat Clinic
- Rhode Island Hospital Employee & Occupational Health
- Rhode Island Hospital Epilepsy
- Rhode Island Hospital Food and Nutrition Services
- Rhode Island Hospital Gamma Knife Center
- Rhode Island Hospital Gastroenterology
- Rhode Island Hospital Hematology Clinic
- Rhode Island Hospital Hepatology Clinic
- Rhode Island Hospital Kidney Transplant Center
- Rhode Island Hospital Muscular Dystrophy Clinic
- Rhode Island Hospital Neurology
- Rhode Island Hospital Neurology Clinic
- Rhode Island Hospital Neurosurgery Clinic
- Rhode Island Hospital Nutrition Center
- Rhode Island Hospital Occupational Therapy
- Rhode Island Hospital Ophthalmology
- Rhode Island Hospital Otolaryngology Clinic
- Rhode Island Hospital Phototherapy
- Rhode Island Hospital Physical Therapy
- Rhode Island Hospital Plastic Surgery
- Rhode Island Hospital Podiatry
- Rhode Island Hospital Pulmonary Clinic
- Rhode Island Hospital Rabies Clinic
- Rhode Island Hospital Rehabilitation Services
- Rhode Island Hospital Rheumatology Clinic
- Rhode Island Hospital Sleep Disorders Center
- Rhode Island Hospital Speech Therapy (2 sites)
- Rhode Island Hospital Spine Center
- Rhode Island Hospital Surgery Clinic
- Rhode Island Hospital Trauma Surgery
- Rhode Island Hospital Urology
- Rhode Island Hospital Vascular Surgery
- Rhode Island Hospital Weight Management
- RIH Physical Medicine and Rehabilitation

- Sebastian Trombatore, MD
- South County Hospital
- South County Hospital Breast Health
- South County Hospital Cancer Care
- South County Hospital Gynecology (3 sites)
- South County Hospital Surgical Services
- The Miriam Hospital CHF
- The Miriam Hospital Center for Weight and Wellness
- The Miriam Hospital Employee & Occ Health
- The Miriam Hospital Food and Nutrition Services
- The Miriam Hospital Immunology
- The Miriam Hospital Kidney Stone Center
- The Miriam Hospital Men's Health Center
- The Miriam Hospital Neurology Clinic
- The Miriam Hospital Nutrition
- The Miriam Hospital Occupational Therapy
- The Miriam Hospital Physical Therapy
- The Miriam Hospital Speech Therapy
- The Miriam Hospital STI
- The Miriam Hospital Surgical Services
- The Miriam Hospital Tuberculosis Clinic
- The Miriam Hospital Weight Management Program
- The Miriam Hospital Women's Cardiac Center
- Tollgate Obstetrics and Gynecology
- Tomorrow Fund Clinic
- University Ob-Gyn, Inc.
- VA Medical Center
- Vanderbilt Rehab Occupational Therapy
- Vanderbilt Rehab Physical Therapy
- Vanderbilt Rehab Speech & Language Therapy
- Vanderbilt Wound Care Program
- West Bay Surgical Associates
- WIH GI Endoscopy Suite
- WIH Maternal Fetal Medicine
- WIH NeoNatal Followup
- WIH Nutrition
- WIH Obstetric and Consultative Medicine
- WIH Obstetrics and Gynecology Care Center
- WIH Outpatient Nutrition
- WIH Prenatal Diagnosis Center
- WIH UroGynecology
- WIH Women's Gastrointestinal Health
- WIH Women's PT
- Women's Care (3 sites)
- Women's Medicine Collaborative
- Women's Program in Physical Therapy

Want to learn more?

Check out the CurrentCare Knowledge Center for tools that practices can use to learn how to integrate CurrentCare patient Enrollment, Hospital Alerts and Viewer into your workflows, and maximize value for your patients and staff.

tinyurl.com/CC-Knowledge-Center



“

I find CurrentCare really, really helpful and I use it often. I can generally get lab results the same day the patient has done the lab, and it saves me a lot of time.

- Julia Manning, Pharmacist
South County Hospital - Coumadin Clinic &
South County Family Medicine

”

Read more: tinyurl.com/Julia-Manning



Rhode Island Quality Institute

CurrentCare is operated by:
The Rhode Island Quality Institute
50 Holden Street, Suite 300
Providence, RI 02908
401.276.9141 | info@riqi.org
CurrentCareRI.org